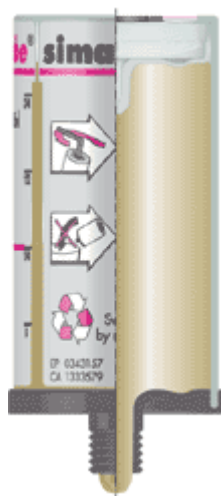


Product specification

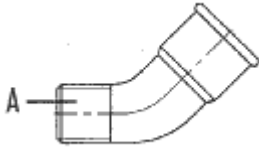


	simalube	simalube <shorty>
Type	automatic longterm grease and oil dispenser	
Power generation	hydrogen gas producing drycells	
Working pressure	max. 3 bar	
Content	125ml	60ml
Adjustment	stepless 1-12 months	
Operating temperature	-20°C ... +55°C (-4°...+131°F) ambient temperature (note: grease consistency changes with temperature)	
Operation / Usage	Grease dispenser can be installed in any position, even under water.	
Usage period	within 2 years of filling date	
Stock temperature	recommended at 20°C +/- 5°C (65°F +/-10°F)	
Weight full	~190g (~6.7 oz)	~115g (~4.1 oz)
Weight empty	~75g (~2.7 oz)	~60g (~2.1 oz)
Dimensions		

Available lubricants (Please ask us for the complete list of all the tested lubricants)

Nr.	Applcation	Temperature range °C	Base oil	Thickener	Oil viscosity at 40°C
SL 01	multipurpose grease	-30/+120	mineral oil	Li/Ca	118 mm ² /s
SL 02	multipurpose grease with MoS ₂	-25/+130	mineral oil	Li	370 mm ² /s
SL 04	high temperature grease	-20/+160	mineral oil	Be	555 mm ² /s
SL 06	fluid grease	-40/+110	mineral oil	Li/Ca	98 mm ² /s
SL 09	biodegradable grease (on request)				
SL 10	food industry grease	-30/+140	synthetic	Al	400 mm ² /s
SL 14	chain oil	-10/+90	mineral oil	-	68 mm ² /s
SL 15	chain oil	0/+250	synthetic	-	265 mm ² /s

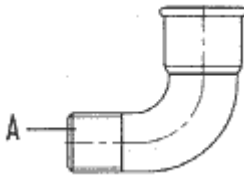
Accessories



Connection 45°

A R1/4

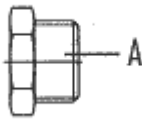
Nr. 1001



Connection 90°

A R1/4

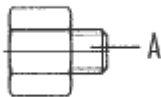
Nr. 1002



Connection, straight

A R3/8 R1/2

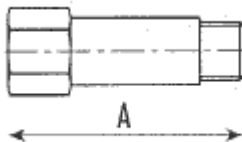
Nr. 1010 1011



Reduction

A R1/8 R1/4 M6 M8 M8x1 M10 M10x1 M12 M12x1,5

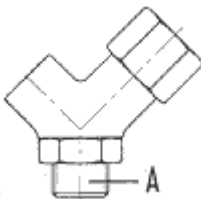
Nr. 1020 1021 1022 1023 1024 1025 1026 1027 1028



Extension

A 10 35 50 [mm]

Nr. 1021 1040 1041



Y-Manifold (contains reduction 1021)

A R1/4

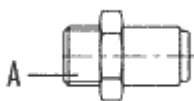
Nr. 1050



Quick connection coupling (for hose d=8mm)

A R1/4

Nr. 1060



Quick connection coupling (for hose d=8mm)

A R1/8 R1/4 R3/8

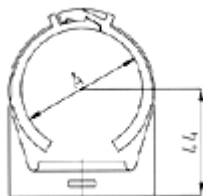
Nr. 1070 1071 1072



Hose (recommended length to the lubrication point: max 0,5m) d=8 /6mm

A per Meter

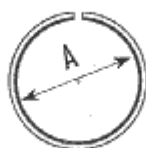
Nr. 2000/...m



Clamb for simalube

A 50 [mm]

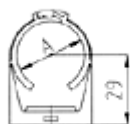
Nr. 2010



Adapter for Perma clamb

A 28 [mm]

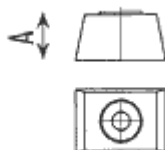
Nr. 2012



Clamb for round brush

A 28 [mm]

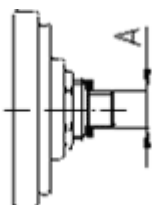
Nr. 2013



Distance holder to clamb for round brush

A 15 [mm]

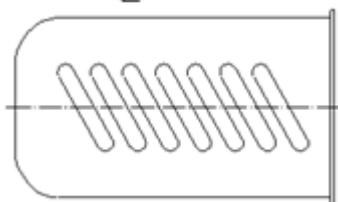
Nr. 2014



Mounting support (consisting of: Flange, connection straight R1/4, Nut)

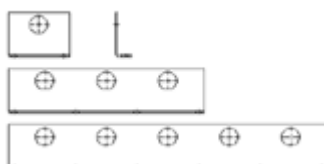
A

Nr. 2080



Protection cover (metal)

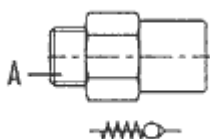
Nr. 2081



Mounting bracket

	1-fold lenght 75 mm	3-fold lenght 240 mm	5-fold lenght 390 mm
--	---------------------	----------------------	----------------------

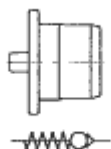
Nr.	2082	2083	2084
------------	------	------	------



Non-return valve (metal)

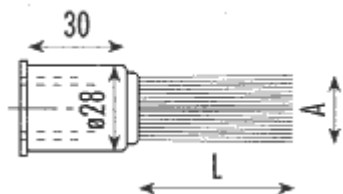
A R1/8 R1/4

Nr. 2020 2021



Non-return valve plug (plastic)

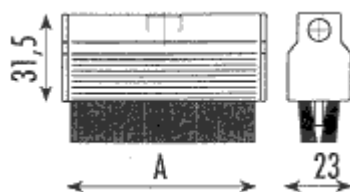
Nr. 5060



Round brush

AxL d=25x45

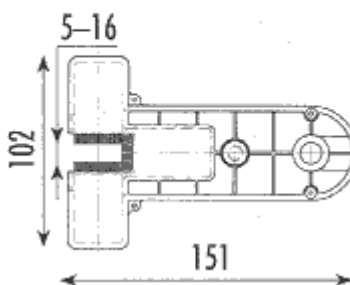
Nr. 2034



Square brushes

A 25 40 70 100

Nr. 2038 2035 2036 2037



Elevator brush

Nr. 2039



Grease gun (with valve pipe)

DIN 1283

Nr. 3010



Connector nipple (for clearing and filling of grease lines)

A R1/4

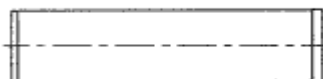
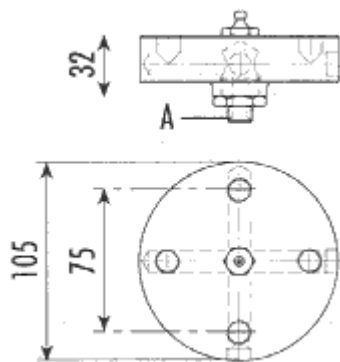
Nr. 3011



Refill nipple (for refilling of simalube)

A R1/4

Nr. 3012



4fold adapter

A	1/2"	1/4"
Nr.	4100	4101

Gas generator (replacement)

	simalube	simalube <shorty>
Nr.	5000	5002

Cartouche (DIN 1284; 400ml)

Fett	SL 01	SL 02	SL 04	SL 06	SL 09	SL 10
Nr.	KA 01	KA 02	KA 04	KA 06	KA 09	KA 10

Attention! Use original accessories only. For applications other than standard, contact simatec engineering or your local dealer.